

# RUTGERS



Great  
things to know  
about  
Rutgers





# Our Reputation

Founded in 1766, Rutgers, The State University of New Jersey, is the sole university in the United States that is a colonial college, a land-grant institution, and a leading national public research university.

400,000



## Top 5

**PUBLIC UNIVERSITIES IN THE NORTHEAST**

- About.com, Best Public Universities
- Forbes, Top Public Colleges for Getting Rich
- U.S. News & World Report, Best Colleges, High School Counselor Rankings of National Universities

## Top 10



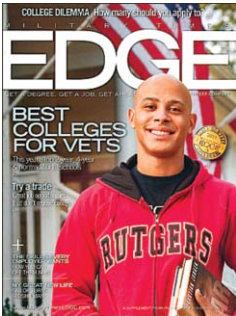
With more than 400,000 alumni, Rutgers has the 7th largest contingent of living alumni in the nation.



## Top 25

**PUBLIC UNIVERSITIES IN THE NATION**

- SmartMoney, Return on Student Investment in Higher Education
- U.S. News & World Report, Best Colleges
- U.S. News & World Report, Regional Universities (Rutgers–Camden)
- Wall Street Journal, Top Recruiter Picks/25 Hottest Colleges
- Washington Monthly, College Guide



### Best for Vets

Military Times Edge magazine, in its annual Best for Vets survey, ranks Rutgers third among more than 200 U.S. four-year institutions for student veterans services. Rutgers has Veterans Services offices on all three regional campuses.

Great research universities are the bedrock of our nation’s tradition of innovation. When one thinks of America’s highest hopes for turning research into reality, one is thinking of America’s great research universities. **Rutgers is one of these greats.**

## TOP 100

**UNIVERSITIES IN THE WORLD**

- Scopus, High-Impact Universities (Australia)
- Shanghai Jiao Tong University Academic Ranking of World Universities (China)
- Times Higher Education, World University Rankings (U.K.)

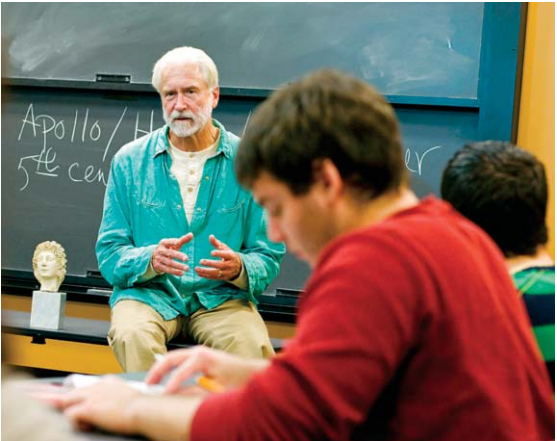


## 3 for 3

School of Law–Camden  
#3 in the nation, U.S. News & World Report, Ten Law Degrees with Most Financial Value at Graduation

Rutgers Business School  
#3 in the nation, New Brunswick undergraduate program, Wall Street Journal, Top Recruiter Picks/25 Hottest Colleges

Edward J. Bloustein School of Planning and Public Policy  
#3 in the nation, Planetizen: Guide to Graduate Urban Planning Programs



### Top 10

**ACADEMIC PROGRAMS RANKED AMONG THE NATION’S TOP 10\***

- African-American History • Criminology • Cultural History • Digital Librarianship • Discrete Mathematics and Combinatorics • Gender and Literature • Library and Information Services • Library Information Systems • Library Services for Children and Youth • Logic • Marine and Coastal Sciences • Philosophy • Planning and Public Policy • Printmaking • Public Affairs Information and Technology Management • Public Management Administration • School Library Services/Media • Women’s History
- (\*Various guides and rankings)

“Rutgers students are well prepared. They collaborate, have a great work ethic, and have an open mind for diversity, and not just diversity of people, but of thought and culture as well. They are flexible and tend to take on leadership roles when working in teams.”

—Prudential Financial on hiring Rutgers graduates. Rutgers ranks #21 in the Wall Street Journal’s Top Recruiter Picks





# Our Faculty

The work of our excellent faculty—consummate teachers and researchers—is recognized and supported by the most esteemed academies, agencies, associations, and foundations in the nation. The students they teach and mentor become the nimble and creative workforce our nation needs. Their research, teaching, and scholarly influence make Rutgers an agent of change in New Jersey and the world.



School of Arts and Sciences economist Rosanne Altshuler is a top national expert on taxation. She testifies frequently in Washington and her findings appear regularly in scholarly journals and the media.

# 1

Rutgers has more faculty in the National Academy of Sciences, the National Academy of Engineering, the Institute of Medicine, and the American Academy of Arts and Sciences than any other public peer school in the Northeast.

# 2

Rutgers and Princeton are the only New Jersey schools in the prestigious Association of American Universities, whose 61 members are North America's leading research universities.

# 3

Rutgers is among the top three public universities in the Northeast in receipt of Sloan Research Fellowships and National Science Foundation Faculty Early CAREER Development Awards, both given to support the nation's most promising early-career scientists, engineers, and scholars.

## Scholar and Teacher

A groundbreaking researcher of race, gender, sexuality, and class, historian Deborah Gray White has earned some of the nation's most prestigious fellowships: Guggenheim, Woodrow Wilson, and American Council of Learned Societies, among others. White is also an engaging teacher. She says the sign of a successful classroom lecture is when students "don't pack up ahead of time. That's when you know—when they are not picking up their books" as the lecture ends.



## Game Changers

### RUTGERS FACULTY RECOGNIZED WITH PINNACLE AWARDS

- MacArthur "Genius" Fellowship: **Jacob Soll** (above), for opening new fields of inquiry about how modern governments came into being
- White House Eleanor Roosevelt Award for Human Rights: **Charlotte Bunch**, for unparalleled advocacy for women's and human rights around the world
- National Medal of Technology: **Richard H. Frenkiel**, for fundamental contributions to cellular mobile communications
- Franklin Institute Benjamin Franklin Medal: **Frederick Grassle**, for pioneering research on unique undersea ecosystems
- Society for Ecological Restoration Sperry Award: **Steven N. Handel**, for outstanding contributions to restoring the natural ecology of degraded urban sites
- Royal Swedish Academy of Sciences Crafoord Prize: **Robert Trivers**, for pioneering ideas on the origin of cooperation and conflict in the animal world

# Top 3

Rutgers faculty continue to attract National Science Foundation (NSF) Integrative Graduate Education and Research Traineeship (IGERT) funding, placing Rutgers among the top 3 American universities for active IGERTs. "The IGERT is the National Science Foundation's flagship interdisciplinary training program, educating U.S. Ph.D. scientists and engineers."—*NSF*



# TOP 10%

Research produced by our faculty puts Rutgers in the top 10 percent of American universities in science and engineering research and development expenditures.

Right: Wise Young (center), one of the world's leading neuroscientists and a pioneer in spinal cord injury research, works closely with students at Rutgers' W.M. Keck Center for Collaborative Neuroscience.



## Only at Rutgers

■ The Rutgers University Cell and DNA Repository is the largest university-based repository of its kind in the world. The repository, led by geneticist Jay Tischfield, is a key international center for the study of genetics and autism, mental health, drug abuse, alcoholism, diabetes, and digestive and kidney diseases.

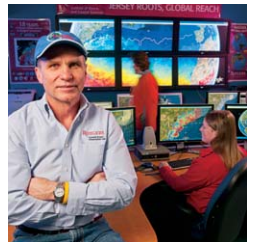
■ Directed by chemist Helen Berman, the Protein Data Bank is the single worldwide repository for three-dimensional protein structures. Scientists around the globe use the free, online library to study, store, and share molecular information as they hunt for new medical and drug therapies.

■ Under the guidance of Dean John J. Farmer Jr., the School of Law–Newark's *Rutgers Law Review* published "A New Type of War," an online monograph of logs, audiotapes, transcripts, and radar data of the flights of 9/11. In its first few days of publication, the site logged 7 million visits from 173 different countries.



# \$433.9 million

Research contracts and grants awarded to faculty in a single year



Oceanographer Scott Glenn was the **2010 New Jersey Professor of the Year**. The Council for Advancement and Support of Education and the Carnegie Foundation bestow the annual awards on a single professor in each state who has an outstanding impact on undergraduates. Past Rutgers winners include Barry Qualls (2006), Stephen Greenfield (2004), and Clement Alexander Price (1999).

Rutgers employs more than 13,000 full- and part-time faculty and staff on its three regional campuses. 99 percent of full-time faculty hold a Ph.D. or other terminal degree.



# Our Students

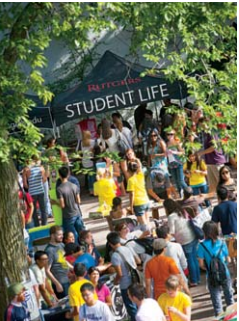
We make access to education a priority for our amazing students. They are smart, driven, diverse, and down-to-earth, helping to make Rutgers “one of the schools recruiters like best.” Few universities, if any, do better than Rutgers in producing academic scholarship that is both highly regarded and practically useful, while also providing educational opportunity to a student body that is so economically and ethnically diverse.



Senior Wylie Lopez says Rutgers’ Office for Diversity and Academic Success in the Sciences “laid the pathway” to his future as a medical student at Robert Wood Johnson Medical School.

58,000 strong

Our 58,000 students come from every county in New Jersey, every state in the nation, and more than 125 countries.



## #1 in Diversity

■ *U.S. News & World Report* Best Colleges: Rutgers–Newark is #1 in student diversity since 1997. Rutgers–New Brunswick consistently ranks in the top 30.

■ HerCampus.com: Rutgers is a Top 10 College for Women (GirlPower)

■ *Advocate College Guide for LGBT Students*: Rutgers is a Top 100 Campus for the LGBT Community



## The Bright Side

The mean SAT score for incoming first-year students at Rutgers’ flagship campus in New Brunswick is 1819, exceeding the national and New Jersey averages by more than 300 points.

## 1,000 of America’s Best

1,000 incoming students are university merit scholarship recipients; they come from towns throughout New Jersey and from California, Maryland, Michigan, South Carolina, Texas, and 25 other states.

## 29 Fulbrights

29 students earned Fulbright Scholarships in 2010 and 2011, the highest at Rutgers in nearly two decades.



More than two-thirds of incoming first-year students at Rutgers are immigrants or the children or grandchildren of immigrants.



## Class of 2011

**WHO HIRED THEM? HERE’S A SAMPLING.**

Accenture • AmeriCorps • AT&T • Bank of New York/Mellon • Bloomberg • Bristol-Myers Squibb • CNBC • Colgate-Palmolive • Disney • General Electric • IBM • Johnson & Johnson • Lockheed Martin • Memorial Sloan-Kettering • Merck • Siemens • Teach for America

**WHERE ARE THEY GOING TO GRADUATE SCHOOL? HERE’S A SAMPLING.**

Carnegie Mellon • Columbia • Cornell • Georgetown • Harvard • Johns Hopkins • MIT • NYU • Princeton • Rutgers • Stanford • UCLA • University of Chicago • University of Michigan • University of Pennsylvania • University of Virginia • Yale

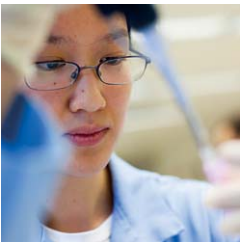


## Smart Play

For the fourth consecutive year, the Rutgers football team ranks in the top three nationally in the NCAA’s Academic Progress Rate (APR), becoming the only university in the nation to earn such a prestigious honor. For the fourth straight year, Rutgers has the best APR mark of any state university in the nation.

## TOP 6%

The top 1,100 students enrolling in Rutgers–New Brunswick are in the top 6 percent of their high school classes and have SAT scores exceeding 2100.



## \$653 million

That’s how much financial aid our students garner in a single year. **86 percent of undergraduates and 80 percent of graduate students receive aid.** 55 percent qualify for Pell grants (awarded to low-income students) and other federal grants. This is an access-to-education measure in which we lead all other AAU public universities by a wide margin.



Engineers Without Borders: **Top student chapter in the U.S.**

Presidential Scholars are the top enrolling Rutgers students; they have a mean SAT of almost 2300 and an average percentile high school rank of the top 3 percent. Rutgers enrolled 120 of them in 2011.



# Our Impact

With our Jersey Roots and Global Reach, Rutgers is proud to be The State University of New Jersey and proud that Rutgers people make lasting contributions to the communities and economies of our home state, the nation, and the world.



With two Rutgers degrees, alumnus Gary M. Cohen embodies the Jersey Roots, Global Reach spirit. He is executive vice president of global health care company BD—a major NJ employer—and is also chair of the CDC Foundation, board director for the U.S. Fund for UNICEF, and adviser to the Clinton Global Initiative. He advocates for improving health care in the developing world and has traveled to 60 countries.

## Business Smarts

**WITH RUTGERS' HELP, NEW JERSEY'S SMALL BUSINESSES AND STARTUPS SUCCEED.**

**New Jersey Small Business Development Centers:** 715 new businesses established and 9,582 jobs created or retained in a single year

**Rutgers–Camden Business Incubator:** Startups employ 220; 16 of 19 graduating companies stayed in New Jersey

**Food Innovation Center:** 67 local residents employed to assist client companies; 32 products commercialized

**EcoComplex Green Business Incubator:** 587 "green startup" jobs created since 2005; nearly two-thirds of 22 graduating companies stayed in New Jersey



For every \$1 the state invests in Rutgers, we channel \$6 back into the economy.

## 500+ Patents

- Top 25 percent in the nation in licensing revenue and patent activity
- 500-plus U.S. patents, with more than 300 in the past decade
- 72-plus spin-off companies, with more than 50 in New Jersey



Rutgers Future Scholars Jason Gaines, left, and Jacqueline Flores, right, intern with Middlesex County Superior Court Judge Vincent LeBlon, who is a Rutgers alumnus.

## Rutgers Future Scholars: Pathway to College Success

Some 800 middle school and high school students from Rutgers' hometowns are aiming for the top through the Rutgers Future Scholars Program. Unique in the nation, the program identifies academically promising 7th graders from financially disadvantaged backgrounds and gives them five years of intensive, year-round precollege support. Students who complete the program and are accepted at Rutgers attend the university tuition-free. The program to date has a 0 percent high school dropout rate.



## \$1,000,000+

Thousands of Rutgers people devote themselves to local concerns. Rutgers Against Hunger donates 1,200 pounds of food to the needy each week, the New Jersey Small Business Development Centers help create or retain 9,000-plus jobs each year, and the Rutgers University Dance Marathon (above) has raised more than \$1 million over three years to aid sick children.

## Only Rutgers

Rutgers is the only New Jersey research university recognized nationally for its "significant commitment to and demonstration of community engagement." This Carnegie Foundation for the Advancement of Teaching's Community Engagement classification includes both Rutgers–New Brunswick and Rutgers–Newark, placing Rutgers among only 296 U.S. schools to earn this distinction.



## 3,600+

More than 3,600 international students from 125-plus countries—from Albania to Zimbabwe—study at Rutgers, more than 700 Rutgers students learn and travel through Study Abroad, and more than 90 students from other countries choose Rutgers for their Study Abroad experience.

## "Call Rutgers."

—Food Innovation Center client and pasta sauce entrepreneur Michele Visceglia's advice when asked how to start a business, quoted in the *New York Times*



## Jersey Roots, Global Reach

**RUTGERS PEOPLE AND PROGRAMS MAKE A DIFFERENCE IN EVERY CORNER OF THE EARTH.**

**North America** Rutgers medical anthropologist Peter Guarnaccia studies community health in Oaxaca, Mexico, and New Brunswick, New Jersey—home to Rutgers' flagship campus and to many Oaxacan immigrants. Capitalizing on this unique demographic, Rutgers takes a creative, holistic approach to improving the lives of people who reside in our hometown and more than 3,000 miles away. Above, School of Environmental and Biological Sciences undergraduate Kenneth Disbrow works in an Oaxacan clinic during a summer internship.

**South America** When the Brazilian government said it would invest \$2 billion in 75,000 science and technology scholarships "for the best students from Brazil to study abroad at the world's best universities," Rutgers became a partner in the Science Without Borders initiative. Rutgers will address Brazil's shortage of scientists and engineers as it builds a strong bond with a rising world economic power.

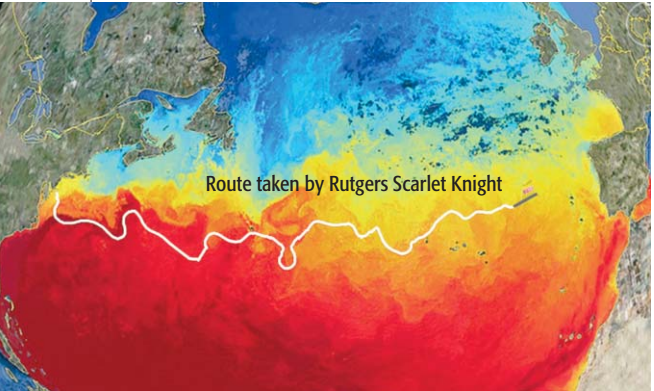
**Africa** Rutgers is one of three American universities leading a USAID effort in Liberia to build university-based centers of excellence in agriculture and engineering. Since peaceful elections in 2005, Liberia has been a country on the way up in Africa. The USAID program's goal: ensure that emerging "Liberia is better equipped to meet its key development challenges."

**Asia** Our International Executive MBA (IEMBA) brings the excellence of Rutgers Business School to Shanghai, Beijing, and Singapore. The same faculty of our U.S. EMBA program—globally ranked #5 in strategy and #6 in finance by *BusinessWeek*—travel to our Asian locales to teach IEMBA courses.

**Europe** The Large Hadron Collider (LHC) in Switzerland is changing fundamental physics by revealing nature's most basic subatomic particles—the building blocks of all things—and Rutgers is at the forefront of the research. Our physicists are contributing crucial hardware for the LHC and will analyze the wealth of new data the collider will produce.

Likened to the feats of Charles Lindbergh and Amelia Earhart, the Rutgers Scarlet Knight made history as the first robotic underwater glider to cross the Atlantic. The pioneering undersea data-collecting glider "shines light on the mysteries of the oceans ... to achieve the goal of understanding the greatest resource of our planet."

—Eva Pell, Smithsonian Institution Under Secretary for Science, on the Rutgers Scarlet Knight as it entered the Smithsonian's permanent collection





# Our University

## Rutgers, The State University of New Jersey

- 8th oldest institution of higher education in the U.S.
- 28 schools and colleges across three regional campuses
- Home to New Jersey’s most extensive and diversified network of research laboratories
- Carnegie Classification: Research–Very High Research Activity, the highest classification
- Strong presence in all 21 New Jersey counties; teaching and research worldwide



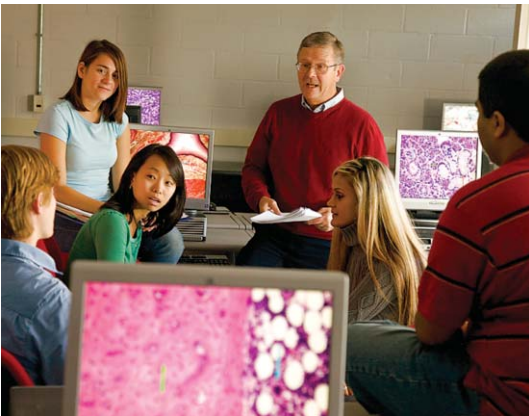
Doctoral student Philomena Chu's research on renewable and sustainable fuels is funded through the National Science Foundation's most prestigious program for educating Ph.D. scientists and engineers.



Rutgers Day is an annual spring event when we share all things Rutgers with New Jersey and beyond. Each year, more than 75,000 attendees visit the flagship campus in New Brunswick to experience free performances, tours, exhibits, hands-on activities, and sporting events.



Rutgers’ 1.4 megawatt solar farm is one of the largest both in New Jersey and at a single campus in the nation.



## Students

### ENROLLMENT (FALL 2011)

Total: 58,182  
Undergraduate: 43,386  
Graduate: 14,796  
Full-time: 47,651  
Part-time: 10,531  
Men: 48.6%  
Women: 51.4%

### RACE/ETHNICITY FULL-TIME ENROLLMENT

White: 47.1%  
Asian: 19.8%  
Latino: 11.4%  
African American: 10%  
Foreign: 6.2%  
Other: 5.5%

### RESIDENCY

83.8% in-state residents  
16.2% out-of-state

## Cost

### UNDERGRADUATE COSTS (FALL 2011)

■ Tuition, Fees, Room and Board:  
In-state \$24,017  
Out-of-state \$36,679

■ Tuition Only:  
In-state \$10,104  
Out-of-state \$22,766

## Governance

The Board of Governors is the governing body of Rutgers. The Board of Trustees serves in an advisory capacity, with certain fiduciary responsibilities.

## Academics

### DEGREES OFFERED

■ 100-plus undergraduate and 180-plus graduate programs

■ Bachelor’s, Master’s, Doctoral, Professional, Certificate

### DEGREES GRANTED

12,890 (2011)

### CONTINUING EDUCATION

■ 50,000 continuing education and off-campus students served annually

■ 3,000 distance learning students

■ 100s of credit, noncredit, certificate, and professional and personal development courses and programs

## NCAA Athletics

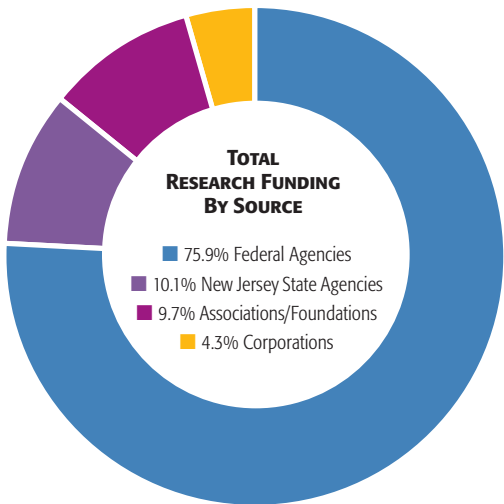
■ Rutgers Scarlet Knights New Brunswick Division I, 24 sports

■ Rutgers Scarlet Raiders Newark Division III, 16 sports

■ Rutgers Scarlet Raptors Camden Division III, 18 sports

## Alumni

Rutgers alumni live in all 50 states and the District of Columbia, in seven U.S. territories, and on six continents.



Rutgers brings to New Jersey more federal research funding than any other university in the state, and more than all of the public New Jersey colleges and universities combined. Our largest federal funding source is the National Institutes of Health.



## Giving to Rutgers

■ Rutgers ranks third in endowment among public universities in the U.S. Northeast and is in the top 12 percent for endowment among private and public U.S. and Canadian colleges and universities.

■ FY 2010 Endowment: \$603,083,000, an increase of 10.7% over the previous year.

## Our Rutgers, Our Future

\$1 billion campaign goal • \$589.1 million donated to date • \$137.4 million donated in FY 2011, an all-time high • 527 new scholarships/fellowships • 14 endowed chairs established to date • 108 new athletic recruits supported

# Our Campuses

## Rutgers–New Brunswick, Our Flagship Campus

### SCHOOLS AND COLLEGES

College of Nursing  
Edward J. Bloustein School of Planning and Public Policy  
Ernest Mario School of Pharmacy  
Graduate School–New Brunswick  
Graduate School of Applied and Professional Psychology  
Graduate School of Education  
Mason Gross School of the Arts  
Rutgers Business School–Newark and New Brunswick  
School of Arts and Sciences  
School of Communication and Information  
School of Engineering  
School of Environmental and Biological Sciences  
School of Management and Labor Relations  
School of Social Work



### ENROLLMENT:

Total: 39,950  
Undergraduate: 31,268  
Graduate: 8,682  
Mean SAT: 1819

## Rutgers–Newark

### SCHOOLS AND COLLEGES

College of Nursing  
Graduate School–Newark  
Newark College of Arts and Sciences  
Rutgers Business School–Newark and New Brunswick  
School of Criminal Justice  
School of Law–Newark  
School of Public Affairs and Administration  
University College–Newark



### ENROLLMENT:

Total: 11,804  
Undergraduate: 7,465  
Graduate: 4,339  
Mean SAT: 1633

## Rutgers–Camden

### SCHOOLS AND COLLEGES

Camden College of Arts and Sciences  
Graduate School–Camden  
School of Business–Camden  
School of Law–Camden  
School of Nursing–Camden  
University College–Camden



### ENROLLMENT:

Total: 6,428  
Undergraduate: 4,653  
Graduate: 1,775  
Mean SAT: 1650

Rutgers University policy prohibits discrimination and harassment in its operations and programs based upon the categories enumerated in its Policy Prohibiting Discrimination and Harassment, which can be viewed at <http://policies.rutgers.edu/PDF/Section60/60.1.12-current.pdf>.

Produced by the Rutgers Department of University Relations

Principal Photography: Nick Romanenko, University Photographer. Additional Photography: Roy Groething, Don Hamerman, David Michael Howarth, Michael Paras

Printed on recycled paper

RU-1112-0046/15M

© Rutgers, The State University of New Jersey, 2011





Department of University Relations  
Old Queens Building  
Rutgers, The State University of New Jersey  
83 Somerset Street  
New Brunswick, NJ 08901-1281  
[www.rutgers.edu](http://www.rutgers.edu)

**JERSEY ROOTS, GLOBAL REACH**