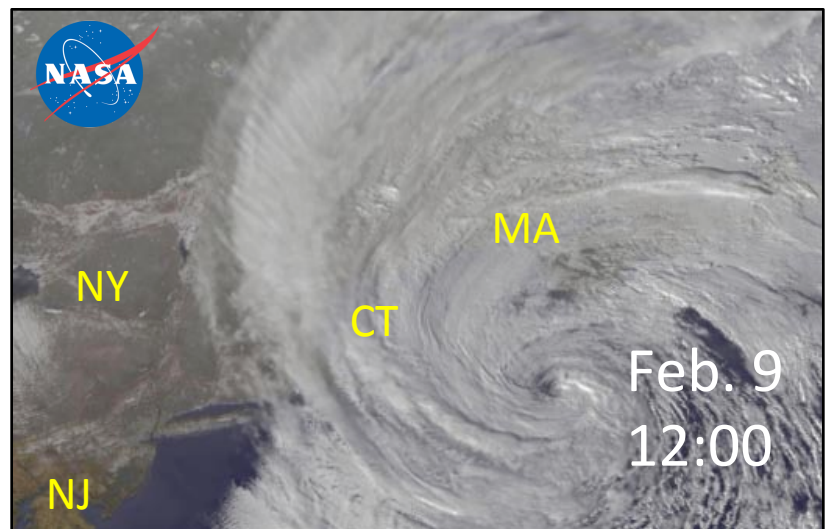
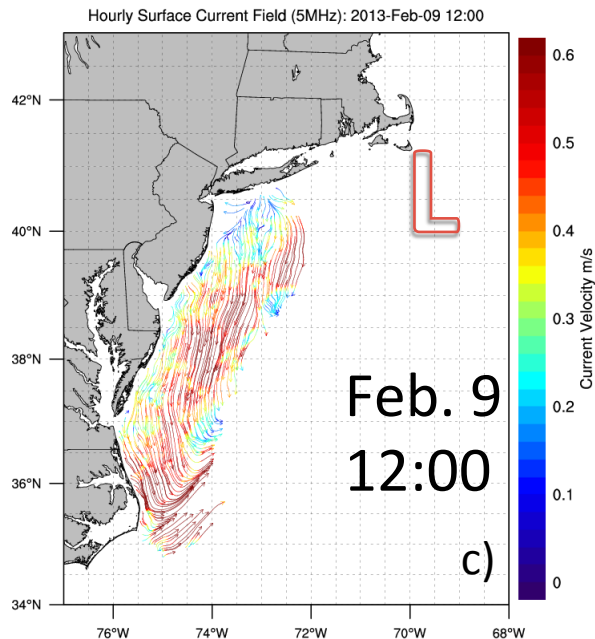
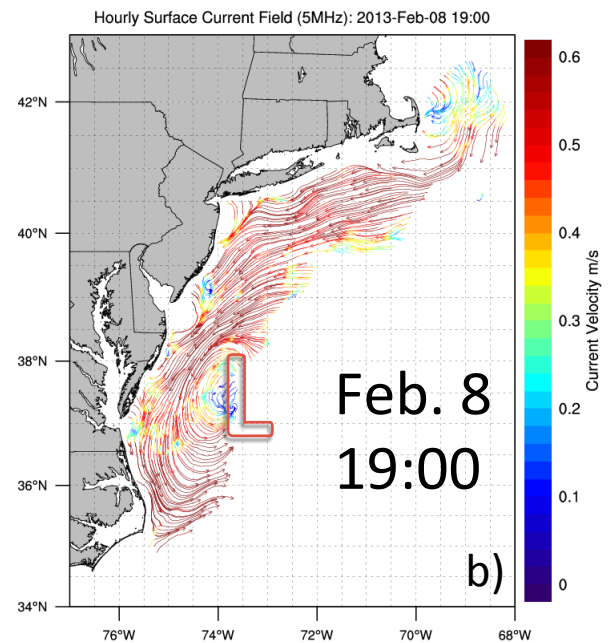
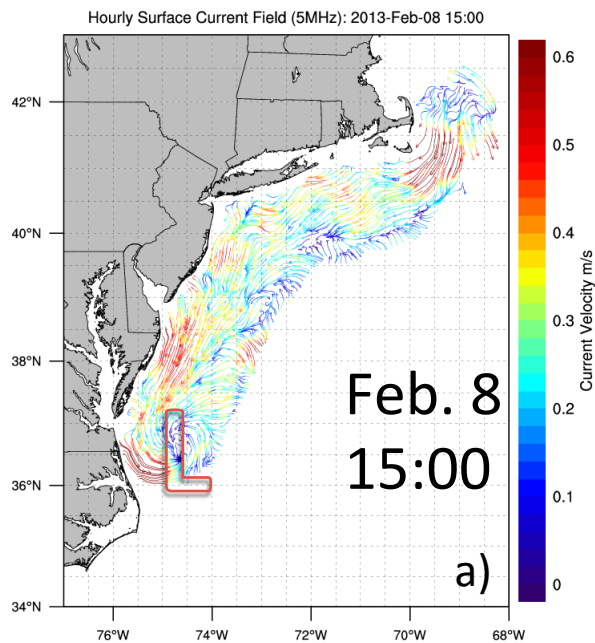


# Nor'easter Nemo

## New Technology – HF Radar



Fourteen long-range High Frequency radars were deployed along the coast of the Mid Atlantic United States. These radars made hourly measurements of the surface currents during the passage of winter storm Nemo (February 8-9, 2013). The figures below give the synoptic picture of the surface currents at a) Feb. 8 15:00 b) Feb. 8 19:00 and c) Feb. 9 12:00. All times are in UTC. The location of the storm's low pressure center is displayed as the red L.



Satellite image of Nemo February 9, 2013 12:00 GMT